

FULLY VENTED

MUNICIPAL PARKING LOT

227 FRANKLINE AVE
NUTLEY NJ, 07110

Chris Vitiello
Licensed Real Estate Agent
C: (551) 204-1361
chris@gridrealestate.biz

Gregory D. Edgell
Licensed Real Estate Broker
C: (973) 610-5145
greg@gridrealestate.biz



– Turn Key Restaurant Available Heart of Nutley—Two Hoods

Former restaurant for lease in the heart of Nutley's central business district. Take advantage of this amazing second-generation restaurant space on heavily trafficked Franklin Ave. This single-story building has 50 feet of frontage, private 4 car parking, direct access to the kitchen from the rear for delivery, and sits adjacent to a 200 stall municipal parking lot. The former restaurant layout featured a buffet wall, a large dining area for 150+ seats. The kitchen boasts two hoods, two walk-in boxes, full-height basement connected through kitchen. Liquor license potentially available in town. Other uses are considered.

LOCATION

CENTRAL BUSINESS DISTRICT
DOWNTOWN JERSEY CITY

AVAILABLE

±6,000SF
FULL HEIGHT BASEMENT

AVAILABLE

IMMEDIATELY

CEILING HEIGHT

12'

TERM

LONG TERM

VPD

17,000

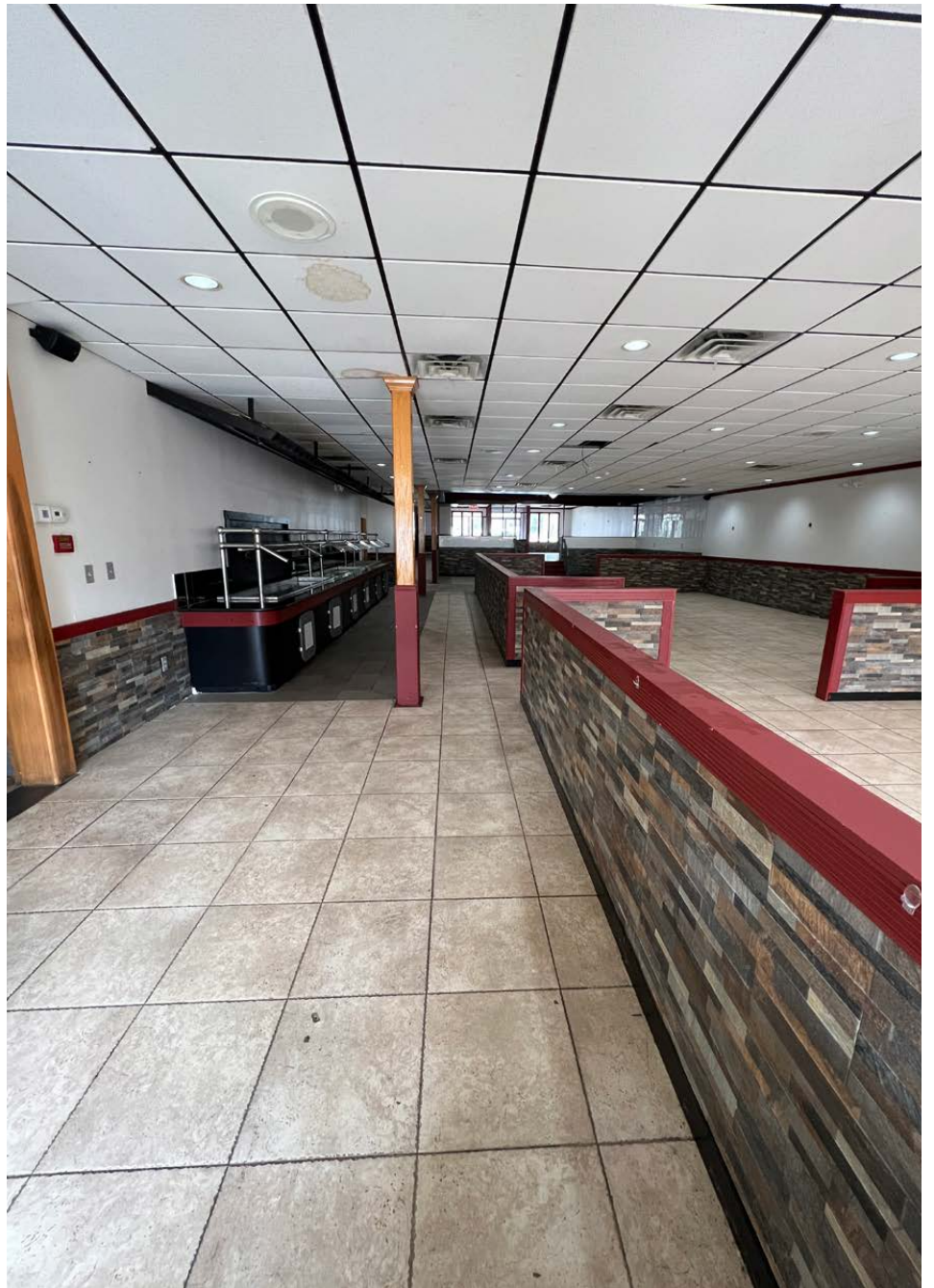
PARKING

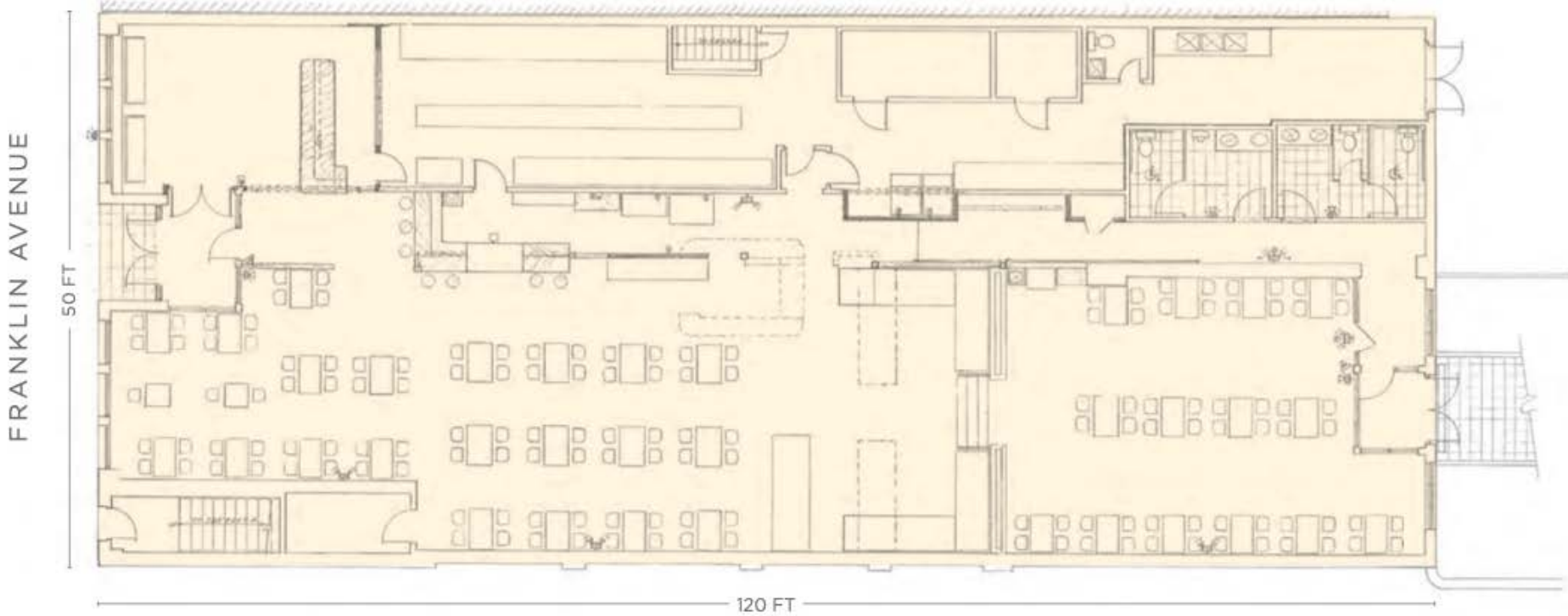
200 STALL PUBLIC LOT

NEIGHBORS

SHOP RITE, VERIZON, WELLS
FARGO, BLINK FITNESS, TD BANK,
PHILLY PRETZEL ACTION, RITA'S,
MATHNASIUM, NUTLEY DINER,
STARBUCKS







GRID EXCLUSIVE CONTENT

2022 TRENDS REPORT

We are pleased to share the 2022 Jersey City Trends map with our friends and clients. The Trends Map was developed to help real estate professionals, the development community and the community at large, to get a snap-shot view of real estate trends across the entire city; and to see how the city is growing and redeveloping the previous years.

The “trends” are gleaned from our interviews and discussions with other professionals and developers whose primary market is Jersey City. We hope this map is helpful in understanding how the city is growing. Please view this map as a starting point for your investigation, not an end point.

[Download Trends Map >>](#)

[Download Trends Report >>](#)

GRID BITS NEWSLETTER

Highlighting ALL of the real estate news each week from the George Washington Bridge to Bayonne Bridge! Grid Bits is a weekly news aggregator that updates our readership on all the new development projects, municipal & political news, green space & parks, new retail, industrial and office leases, regional lawsuits, community kickback and more!

[Explore Now >>](#)

For additional information on this listing please contact:

Grid Real Estate, LLC

201 Marin Blvd, #106
Jersey City, NJ 07302
O: (201) 300-6489
gridrealestate.biz

Chris Vitiello

Licensed Real Estate Broker
C: (551) 204-1361
chris@gridrealestate.biz

Gregory D. Edgell

Licensed Real Estate Broker
C: (973) 610-5145
greg@gridrealestate.biz

